



EC35N - EC40N - EC45N - EC55N

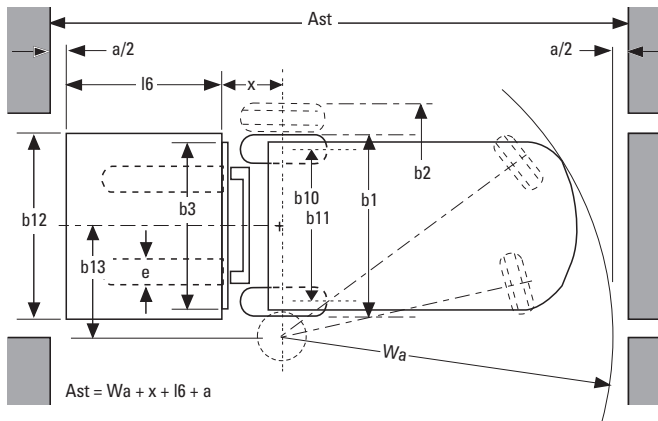
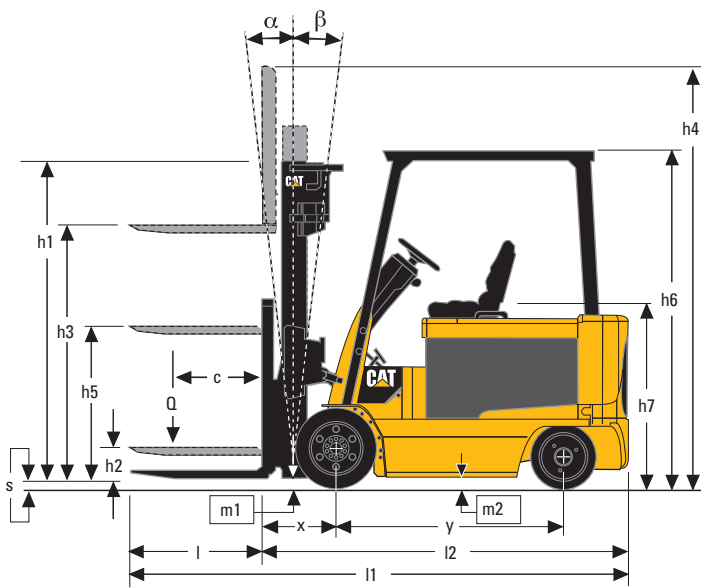
Specifications

Electric powered lift trucks

Cushion tyres, 3.5 - 5.5 tonnes

Characteristics			Cat Lift Trucks	Cat Lift Trucks	Cat Lift Trucks	Cat Lift Trucks
			EC35N	EC40N	EC45N	EC55N
1.01	Manufacturer (abbreviation)		Battery	Battery	Battery	Battery
1.02	Manufacturer's model designation		Seated	Seated	Seated	Seated
1.03	Power source: (battery, diesel, LP gas, petrol)		3500	4000	4500	5500
1.04	Operator type: pedestrian, (operator)-standing, -seated		500	500	600	600
1.05	Load capacity	Q (kg)	450	450	465	480
1.06	Load centre distance	c (mm)	1575	1575	1575	1720
1.08	Load distance, axle to fork face	x (mm)				
1.09	Wheelbase	y (mm)				
Weight						
2.01	Truck weight, without load / including battery (simplex mast, lowest lift height)	kg	6123	6376	7310	8251
2.02	Axle loading with maximum load, front/rear (simplex mast, lowest lift height)	kg	8449/1174	9178/1250	10298/1461	12148/1697
2.03	Axle loading without load, front/rear (simplex mast, lowest lift height)	kg	2837/3285	2765/3662	2756/4504	3194/5150
Wheels, Drive Train						
3.01	Tyres: V=solid, L=pneumatic, SE=solid pneumatic - front/rear		V/V	V/V	V/V	V/V
3.02	Tyre dimensions, front		22x9x16	22x9x16	22x10x16	22x12x16
3.03	Tyre dimensions, rear		18x8x12.1	18x8x12.1	18x8x12.1	18x8x12.1
3.05	Number of wheels, front/rear (x=driven)		2x / 2	2x / 2	2x / 2	2x / 2
3.06	Track width (centre of tyres), front	b10 (mm)	1040	1040	1065	1116
3.07	Track width (centre of tyres), rear	b11 (mm)	965	965	965	965
Dimensions						
4.01	Mast tilt, forwards/backwards	α/β °	6/8	6/8	6/8	6/8
4.02	Height with mast lowered (see tables)	h1 (mm)	2270	2270	2350	2120
4.03	Free lift (see tables)	h2 (mm)	100	100	100	100
4.04	Lift height (see tables)	h3 (mm)	3300	3300	3300	2850
4.05	Overall height with mast raised	h4 (mm)	4650	4650	5055	5320
4.07	Height to top of overhead guard	h6 (mm)	2341	2341	2341	2341
4.08	Seat height	h7 (mm)	1111	1111	1111	1111
4.12	Tow coupling height	h10 (mm)	-	-	-	-
4.19	Overall length	l1 (mm)	3640	3691	3746	3912
4.20	Length to fork face (includes fork thickness)	l2 (mm)	2420	2471	2526	2692
4.21	Overall width	b1/b2 (mm)	1270	1270	1315	1420
4.22	Fork dimensions (thickness, width, length)	s / e / l (mm)	50x150x1220	50x150x1220	50x150x1220	50x150x1220
4.23	Fork carriage to DIN 15 173 A/B/no		3A	3A	3A	4A
4.24	Fork carriage width	b3 (mm)	1060	1060	1060	1060
4.31	Ground clearance under mast, with load	m1 (mm)	100	100	100	100
4.32	Ground clearance at centre of wheelbase, with load (forks lowered)	m2 (mm)	106	106	106	106
4.33	Working aisle width with 1000 x1200 mm pallets, crosswise	Ast (mm)	3864	3908	3959	4148
4.34	Working aisle width with 800 x1200 mm pallets, crosswise	Ast (mm)	3664	3708	3759	3948
4.35	Turning circle radius	Wa (mm)	2214	2258	2294	2468
4.36	Minimum distance between centres of rotation	b13 (mm)	-	-	-	-
Performance						
5.01	Travel speed, with/without load	km/h	16.8/17.9	16.5/17.7	15.5/16.9	14.6/16.6
5.02	Lifting speed, with/without load	m/s	0.31/0.65	0.34/0.65	0.25/0.43	0.21/0.43
5.03	Lowering speed, with/without load	m/s	0.54/0.48	0.54/0.48	0.56/0.50	0.56/0.50
5.05	Rated drawbar pull, with/without load	N	-	-	-	-
5.06	Maximum drawbar pull, with/without load (5 min short duty)	N	-	-	-	-
5.07	Gradeability, with/without load	%	25/-	24/-	20/-	17/-
5.08	Maximum gradeability, with/without load	%	-18	-18	-17	-16
5.09	Acceleration time (10 metres) with/without load	s	-	-	-	-
5.10	Service brakes (mechanical/hydraulic/electric/pneumatic)		Hydraulic	Hydraulic	Hydraulic	Hydraulic
Electric motors						
6.01	Drive motor capacity (60 min. short duty)	kW	15.5	15.5	15.5	15.5
6.02	Lift motor output at 15% duty factor	kW	13.7	13.7	13.7	13.7
6.03	Battery to DIN 43 531/35/36 A/B/C/no		-	-	-	-
6.04	Battery voltage/capacity at 5-hour discharge	V/Ah	48/1160	48/1160	48/1160	48/1160
6.05	Battery weight	kg	1550	1550	1650	1800
6.06	Energy consumption according to VDI 60 cycle	kWh/h	-	-	-	-
Miscellaneous						
8.01	Type of drive control		Mosfet	Mosfet	Mosfet	Mosfet
8.02	Maximum operating pressure for attachments	bar	155	155	155	155
8.03	Oil flow for attachments	l/min	-	-	-	-
8.04	Noise level, value at operator's ear (EN 12053)	dB(A)	-	-	-	-
8.05	Towing coupling design / DIN type, ref.		-	-	-	-





- Ast = Working aisle width with load
- Wa = Turning radius
- x = Load distance, axle to fork face
- l6 = Pallet length (800 or 1000 mm)
- a = Safety clearance = 2 x 100 mm
- b12 = Pallet width (1200 mm)



The Central Vehicle Monitoring System (CVMS) ensures on-the-go surveillance of vital systems. In case of problems, the display alerts the operator so that appropriate service action can be taken. In case over-temperature, power to the drive or hydraulic motors is automatically reduced, ensuring protection against thermal damage.

Lower Cost of Ownership

- Design improvements have extended the service interval to 500hrs, thus reducing the total cost of ownership.
- An intelligent monitoring system allows the operator to monitor all major truck functions during normal operation and helps ensure that the truck is serviced in a timely manner.
- The proven controller is simple and compact. Travel and hydraulic speeds can be individually programmed to ensure job matched performance in each work application.

Unmatched Productivity

- Separately excited motors match torque and speed to each application and provide regenerative braking for greater efficiency and longer shift length.
- The performance can be electronically tailored to the precise requirements of any application.
- Smooth cushion tyres maximize stability at high lift and ensure low rolling resistance, minimizing energy consumption and extending shift length.
- Both the drive and hydraulic control systems utilize MOSFET transistor technology, providing responsive performance and enhanced productivity.

Safety and Ergonomics

- Low noise levels increase operator comfort.
- The tilt steering column and adjustable cowl mounted hydraulic levers enhance operator comfort.
- The LCD display panel tilts with the steering column and keeps the operator informed of critical truck functions.
- Operator 'Presence detection system' (PDS) disconnects the power to the drive motor and hydraulic functions when the operator is not seated, and includes warning indicators for seat belt and parking brake.

Options

- Battery slide-in rails provide side extraction of the battery for quick changes.
- Foot-operated directional control is available to enhance productivity.



Cat[®] Lift Trucks.

Your partner in materials handling.

EC35N/EC40N					EC35N	EC40N
Mast Type	h3	h1	h4	h2 / h5	Q @ c = 500mm kg	Q @ c = 500mm kg
Simplex	3300	2270*	4550	100	3500	4000
	3700	2470	4950	100	3500	4000
	4500	2950	5750	100	3375	4000
Duplex	3230	2270*	4480	1020	3500	4000
	3650	2470	4900	1220	3500	4000
Triplex	5050	2350	6300	1100	3450	3850
	5500	2500	6750	1250	3350	3725

Mast Performance and Capacity

- h1 Height with mast lowered
- h2 Standard free lift
- h3 Standard lift height
- h4 Height with mast raised
- h5 Full free lift
- Q Lifting capacity, rated load
- c Load centre (distance)

* Lower than overhead guard.

EC45N/EC55N					EC45N	EC55N
Mast Type	h3	h1	h4	h2 / h5	Q @ c = 500mm kg	Q @ c = 500mm kg
Simplex	2840	2120*	4125	100	4500	5500
	3300	2350	4585	100	4500	5500
	4000	2800	5285	100	4500	5500
Triplex	4750	2350	6035	1065	4500	5500
	5260	2520	6545	1235	4375	5500

Battery Compartment		EC35N	EC40N	EC45N	EC55N
Length (min)	mm	1030	1030	1030	1030
Width (min)	mm	1170	1170	1170	1170
Height (min)	mm	615	615	615	615
Minimum Weight (48V)	kg	1550	1550	1650	1800

catliftruck@mcf.nl
www.catliftruck.com

CESC0856(01/08)ok
Copyright ©2008, MCFE. All rights reserved.
CATERPILLAR, CAT, their respective logos and
'Caterpillar Yellow', as well as corporate and product
identity used herein, are trademarks of Caterpillar and
may not be used without permission.
Printed in The Netherlands

NOTE: Performance specifications may vary depending on standard manufacturing tolerances, vehicle condition, types of tyres, floor or surface conditions, applications, or operating environment. Trucks may be shown with non-standard options. Specific performance requirements and locally available configurations should be discussed with your Cat lift trucks Dealer. Cat Lift Trucks follows a policy of continual product improvement. For this reason, some materials, options and specifications could change without notice.