

Truck width of just 820 mm

Narrow aisle width for use
in confined warehouse
areas and block storage

Ergonomic sideways seated
position for fatigue-free travel

3-phase AC technology
for dynamic movement
operations



ESC 214/216/214z/216z

Electric sideways-seated truck (1,400/1,600 kg)

The Jungheinrich electric sideways seat stackers ESC 214/216 are ideally suitable for longer transport distances during stacking and retrieval. With a width of just 820 mm and a short working aisle width, the ESC shows particular strength in applications where space is limited and in block storage warehouses.

The comfortable sideways seating position provides the operator with excellent visibility. An advantage which comes into its own during frequent changes of direction. Individual height adjustment of the foot well provides a relaxed work environment for operators of varied heights.

Other features include:

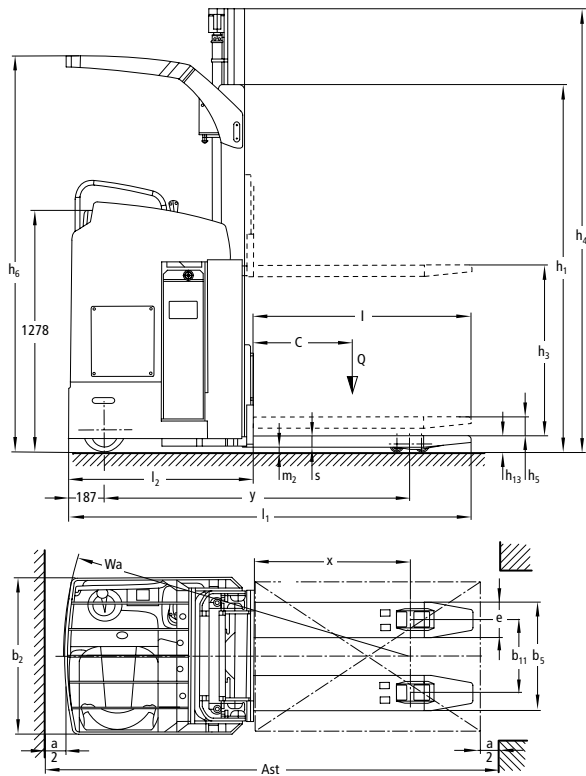
- Powerful, innovative 2.8 kW three-phase drive motor for high acceleration and performance

- High residual capacities and powerful lift motor.
- Extremely durable frame for very high operational demands.
- Display with steering position display and travel program selection (optional).
- Electric steering for easy manoeuvring with a few turns of the steering wheel
- Excellent energy management for low operating costs

The initial lift of the ESC 214z/216z allows it to cope extremely easily with uneven floor conditions. All travel and lift functions are performed using the multifunction lever which is within easy reach.

Thanks to the compact design and excellent ergonomics, the ESC is the ideal stacker for working in restricted spaces.

ESC 214/216/214z/216z



Standard mast designs ESC 214/216/214z/216z									
	Lift h_3 (mm)	Lowered mast height h_1 (mm)		Free lift h_2 (mm)		Extended mast height h_4 (mm)		Height of overhead guard h_6 (mm)	
		ESC 214 / 214z	ESC 216 / 216z	ESC 214 / 214z	ESC 216 / 216z	ESC 214 / 214z	ESC 216 / 216z	ESC 214 / 214z	ESC 216 / 216z
Duplex ZT	2800	-	1995	-	100	-	3372	-	2093
	2900	1995	-	100	-	3422	-	2093	-
	3100	-	2145	-	100	-	3672	-	2243
	3200	2145	-	100	-	3722	-	2243	-
	3500	-	2345	-	100	-	4072	-	2288
	3600	2345	-	100	-	4122	-	2288	-
	4000	-	2595	-	100	-	4572	-	2288
	4100	2595	-	100	-	4622	-	2288	-
	4200	-	2695	-	100	-	4772	-	2288
Duplex ZZ	4300	2695	-	100	-	4822	-	2288	-
	2800	-	1945	-	1373	-	3372	-	2093
	2900	1945	-	1420	-	3422	-	2093	-
	3100	-	2095	-	1523	-	3672	-	2243
	3200	2095	-	1570	-	3722	-	2243	-
	3500	-	2295	-	1723	-	4072	-	2288
	3600	2295	-	1770	-	4122	-	2288	-
	4000	-	2545	-	1973	-	4572	-	2288
	4100	2545	-	2020	-	4622	-	2288	-
Triplex DZ	4200	-	2645	-	2073	-	4772	-	2288
	4300	2645	-	2120	-	4822	-	2288	-
	4200	-	1945	-	1376	-	4770	-	2093
	4300	1945	-	1426	-	4830	-	2093	-
	5250	-	2295	-	1726	-	5820	-	2288
	5350	2295	-	1776	-	5880	-	2288	-
	6200	-	2615	-	2046	-	6790	-	2288

Technical data in line with VDI 2198

Identification	1.1	Manufacturer (abbreviation)		Jungheinrich			
	1.2	Model		ESC 214	ESC 216	ESC 214z	ESC 216z
	1.3	Drive		Electric			
	1.4	Manual, pedestrian, stand-on, seated, order picker operation		seat			
	1.5	Load capacity/rated load	Q t	1.4	1.6	1.4	1.6
	1.6	Load centre distance	c mm	600			
	1.8	Load distance	x mm	860	860	874 ²⁾	874 ²⁾
	1.9	Wheelbase	y mm	1,648	1,648	1,677 ²⁾	1,677 ²⁾
Weights	2.1.1	Net weight incl. battery (see row 6.5)	kg	1,590	1,590	1,660	1,660
	2.2	Axle load with load front/rear	kg	1,316 / 1,674	1,340 / 1,850	1,285 / 1,775	1,370 / 1,890
	2.3	Axle load without load front/rear	kg	1,113 / 477	1,113 / 477	1,162 / 498	1,162 / 498
Wheels / frame	3.1	Tyres		Polyurethane			
	3.2	Tyre size, front	mm	Ø 230 x 77			
	3.3	Tyre size, rear	mm	Ø 85 x 85			
	3.4	Additional wheels (dimensions)	mm	Ø 140 x 126			
	3.5	Wheels, number front/rear (x = driven wheels)		2-1x/4			
	3.6	Tread width, front	b ₁₀ mm	544			
	3.7	Tread width, rear	b ₁₁ mm	385			
Basic dimensions	4.2	Mast height (lowered)	h ₁ mm	1,995			
	4.3	Free lift	h ₂ mm	100			
	4.4	Lift	h ₃ mm	2,900	2,800	2,900	2,800
	4.5	Extended mast height	h ₄ mm	3,422			
	4.6	Initial lift	h ₅ mm	0	0	125	125
	4.7	Height of overhead guard	h ₆ mm	2,095 ³⁾			
	4.8	Seat height/stand height	h ₇ mm	950			
	4.15	Height, lowered	h ₁₃ mm	90			
	4.19.4	Total length including fork length	l ₁ mm	2,125	2,125	2,140	2,140
	4.20	Length to face of forks	l ₂ mm	975	975	990	990
	4.21	Overall width	b ₁ /b ₂ mm	820			
	4.22	Fork dimensions	s/e/l mm	60 / 185 / 1,150	60 / 185 / 1,150	60 / 185 / 1,150	65 / 185 / 1,150
	4.25	Width across forks	b ₅ mm	570			
	4.32	Ground clearance, centre of wheelbase	m ₂ mm	30	30	25	25
	4.34	Aisle width for pallets 800 x 1200 lengthways	Ast mm	2,383 ¹⁾	2,383 ¹⁾	2,398 ¹⁾	2,398 ¹⁾
	4.35	Turning radius	W _a mm	1,843	1,843	1,872 ²⁾	1,872 ²⁾
Performance data	5.1	Travel speed, laden/unladen	km/h	9.1 / 9.1			
	5.2	Lift speed, laden/unladen	m/s	0.15 / 0.24	0.13 / 0.24	0.14 / 0.23	0.14 / 0.23
	5.3	Lowering speed, laden/unladen	m/s	0.42 / 0.42	0.42 / 0.42	0.42 / 0.38	0.42 / 0.38
	5.7	Gradeability laden/unladen	%	7 / 12			
	5.10	Service brake		electric			
Electrics	6.1	Drive motor, output S2 60 min.	kW	2.8			
	6.2	Lift motor rating at S3 10%	kW	3			
	6.3	Battery as per DIN 43531 / 35/36 A, B, C, no		no			
	6.4	Battery voltage/nominal capacity K5	V/Ah	24 / 465			
	6.5	Battery weight	kg	380			
	6.6		kWh/h	0			
Misc.	8.1	Type of drive control		AC speedCONTROL			

¹⁾ Diagonal in accordance with VDI: + 190 mm

²⁾ Load section raised: - 78 mm

³⁾ See mast table

Benefit from the advantages



Grab handle for safe access and for the fitting of various options



Comfortable seating position with height-adjustable footplate



Ergonomic layout of all controls



Excellent visibility through the mast

Innovative 3-phase AC technology

Better performance simultaneously coupled with reduced operating costs. Make the most of these advantages:

- High level of efficiency with excellent energy management.
- Powerful acceleration.
- Rapid change in direction of travel
- No carbon brushes - maintenance-free drive motor.
- Two-year warranty on the drive motor.

Productivity-enhancing ergonomics

The arrangement of the operator workstation, sideways on to the direction of travel, ensures optimum visibility and reduces potential neck complaints due to frequent changes in direction. A safety switch in the foot -well ensures maximum safety.

- Comfortable seat with adjustment for body weight.
- Padded armrest.
- Padded knee area.
- Grab handle for safe entry (also serves as the mounting point for storage or for a radio data terminal).

Travel comfortably and safely

Safe speed regulation by electronic Speed-Control. Speed-Control ensures maximum safety and effortless control of speed in all situations.

- Roll-back protection on gradients by self-acting brake.
- Constant travel speed both ways on gradients.
- Energy recovery by regenerative braking.
- Particularly smooth stepless operation.

Easy operation and good all-round visibility

- Operation of all drives and lift functions by multifunction lever within easy reach.
- Proportional hydraulics for precise load positioning.
- Smooth electric steering.
- Protected seating position within the enclosed truck profile.
- Free all-round view with no obstructive struts; good visibility through the mast and overhead guard.

Narrow truck with high manoeuvrability

- With a truck width of only 820 mm, the ESC is ideal for use in narrow aisles and block storage.
- Narrow working aisle width and well protected operator position for outstanding operation in narrow working aisles.

Robustness and ease of servicing

- Easy access to the controller and electronics.
- Side opening to the drive compartment.
- Robust, enclosed frame.

Powerful battery

- 3 PzS 465 Ah
- Lateral battery exchange on rollers.

Additional equipment

- Various storage options.
- Heated seat.
- Load guard.
- Display (travel direction, steering setting, battery status, operating hours, time of day, travel programs).

Jungheinrich Aktiengesellschaft

Friedrich-Ebert-Damm 129
D-22047 Hamburg
Telephone +49 40 6948-0
Telefax +49 40 6948-1777

info@jungheinrich.com
www.jungheinrich.com

The German production facilities in Norderstedt, Moosburg and Landsberg are certified. **ISO 9001**
ISO 14001

Jungheinrich fork lift trucks meet European safety requirements.



JUNGHEINRICH
Machines. Ideas. Solutions.