

**LFP 51,2V 450Ah**

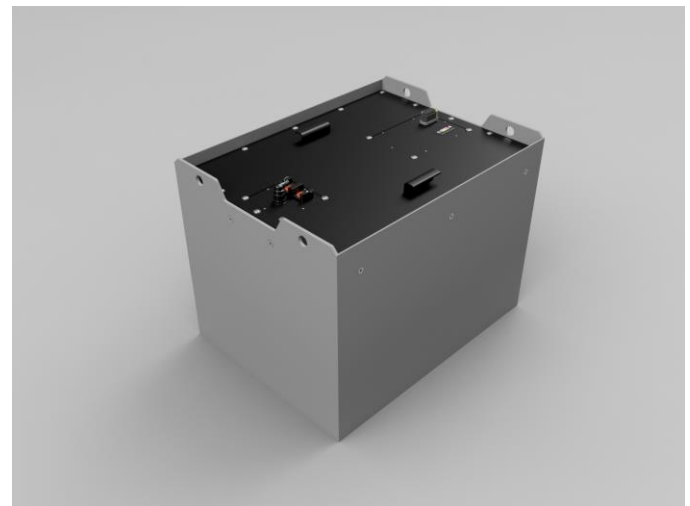
Cod. 3023203

BATTERY	Li-Ion
<b>MECHANICAL CHARACTERISTICS</b>	
DIMENSIONS (mm)	830 x 630 x 627 <sup>4</sup>
WEIGHT (Kg)	847
BATTERY TRAY COLOUR	RAL 9007
LID COLOUR	RAL 9005

<b>ELECTRICAL CHARACTERISTICS</b>	
NOMINAL VOLTAGE (V)	51,2
MAXIMUM VOLTAGE (V)	58,4
MINIMUM VOLTAGE (V)	43,2
CAPACITY (Ah) @ 1C 25°C	450
ENERGY (kWh)	23,0
NOMINAL DISCHARGE CURRENT (A)	320 <sup>1,2</sup>
MAXIMUM DISCHARGE CURRENT – 5s (A)	675
NOMINAL CHARGE CURRENT (A)	225 <sup>1,2</sup>
MAXIMUM CHARGE CURRENT – 5s (A)	540

<b>OPERATING CONDITIONS</b>	
OPERATING TEMPERATURE (°C)	-20°C/55°C <sup>3</sup>
CHARGING TEMPERATURE (°C)	0°C/45°C <sup>3</sup>
STORAGE TEMPERATURE (°C)	-10°C/35°C
MAX. HUMIDITY (no condensation)	95%
MAXIMUM ALTITUDE (m)	2000
CYCLES @ 80%DoD 25°C	4000
CALENDAR LIFE (Years)	10
IP RATING	65

<b>COMPLIANCE:</b>	
QUALITY STANDARDS	UNI EN ISO 9001:2008
DIRECTIVES	2014/30/EU, 2006/66/CE
UN	UN 38.3
EMC	CEI EN 61000-6-2:2006, CEI EN 61000-6-3:2007/A1:2013
STANDARDS	IEC 62619:2017



<b>ELECTRICAL CONNECTIONS</b>	
ELECTRICAL POWER CONNECTION	MISSING
POWER CON. POSITION	Floating on top
CHARGE CONNECTION	MISSING
CHARGE CON. POSITION	-
ANTIARC TYPE	TYPE S

<b>SIGNAL CONNECTION</b>	
CANBUS PROTOCOL	MIDAC STANDARD
CANBUS SPEED	500kbps

<sup>1</sup> Maximum charge/discharge current may be limited by the plug.

<sup>2</sup> Current is limited at both sides of the temperature range (derating).

<sup>3</sup> Temperature relative to the battery compartment. Maximum charge/discharge current is limited at low/high temperature. See note <sup>2</sup>.

<sup>4</sup> Tray height: on some models does not include connectors / power terminals / external cables' height.