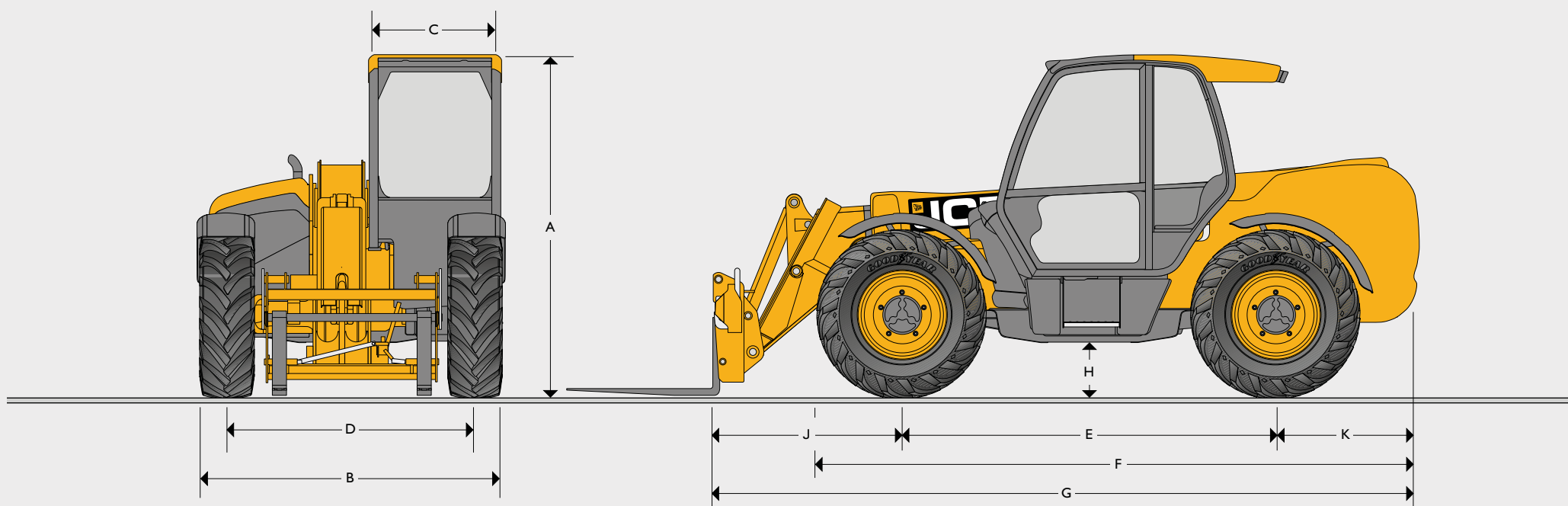


STATIC DIMENSIONS



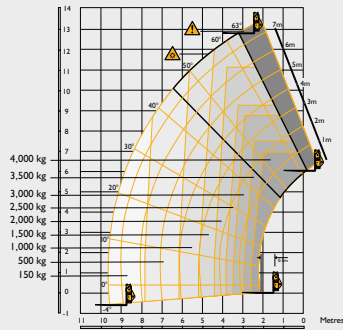
STATIC DIMENSIONS

Machine model		531-70	541-70	535-95	533-105	535-125 HiViz	540-140 HiViz	540-170	540-180 HiViz	540-200
A Overall height	m	2.49	2.49	2.49	2.49	2.59	2.59	2.69	2.59	2.72
B Overall width (over tyres)*	m	2.23	2.23	2.36	2.36	2.35	2.35	2.44	2.35	2.44
C Inside width of cab	m	0.94	0.94	0.94	0.94	0.94	0.94	0.94	0.94	0.94
D Front track	m	1.81	1.81	1.87	1.87	1.90	1.90	1.90	1.90	1.97
E Wheelbase	m	2.75	2.75	2.75	2.75	2.75	2.75	2.75	2.75	2.75
F Overall length to front tyres	m	4.38	4.38	4.38	4.38	4.74	4.74	5.08	4.75	5.09
G Overall length to front carriage	m	4.99	4.99	4.99	5.38	5.80	6.23	6.36	6.27	6.81
H Ground clearance	m	0.40	0.40	0.40	0.40	0.40	0.40	0.40	0.40	0.41
J Front wheel centre to carriage	m	1.25	1.25	1.20	1.62	1.68	2.11	1.94	2.15	2.39
K Rear wheel centre to rear face	m	0.99	0.99	1.04	1.01	1.37	1.37	1.67	1.37	1.67
Overall width with stabilisers fully deployed	m	NA	NA	NA	2.63	2.57	2.57	3.55	3.39	3.82
Outside turn radius (over tyres)	m	3.7	3.7	3.7	3.7	3.75	3.75	4.1	3.75	4.1
Carriage rollback angle	degrees	42.6	42.6	41.0	41.2	37.0	37.0	39	36.5	39
Carriage dump angle	degrees	37.5	37.5	24.0	24.0	12.5	12.5	8.8	12.5	8.8
Weight	kg	7060	7850	8215	8850	10066	10880	12060	11380	12985
Tyres		400/80 - 24	400/80 - 24	400/80 - 24	400/80 - 24	400/80 - 24	400/80 - 24	440/80 - 24	400/80 - 24	440/80 - 24

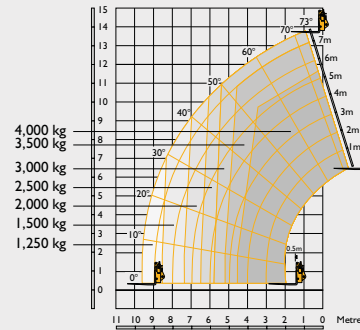
\* Type dependent

LIFT PERFORMANCE

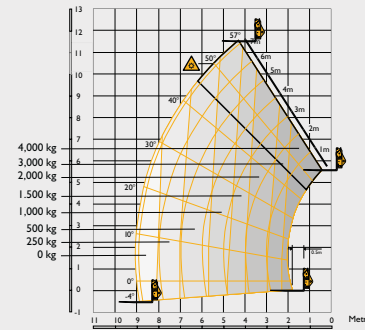
540-140 HiViz stabilisers retracted sway\*



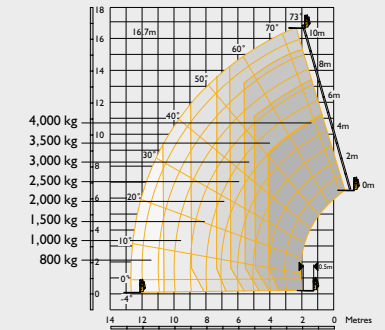
540-140 HiViz stabilisers extended sway\*



540-170 stabilisers retracted sway



540-170 stabilisers extended sway

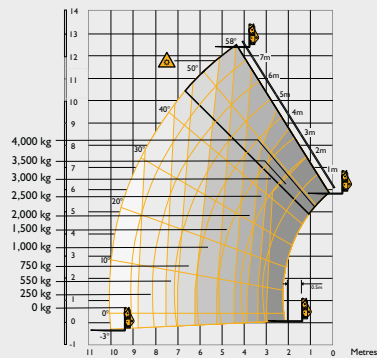


Maximum lift capacity	kg	4000	4000	4000	4000
Lift capacity to full height	kg	1500	3000	1000	2500
Lift capacity at full reach	kg	150	1250	0	800
Lift height	m	12.89	13.78	11.57	16.7
Reach at maximum lift height	m	3.09	1.01	4.32	1.97
Maximum forward reach	m	9.70	9.64	9.04	12.50
Reach with 1 tonne load	m	6.08	9.64	5.68	11.70
Placing height	m	12.40	13.30	10.90	16.20

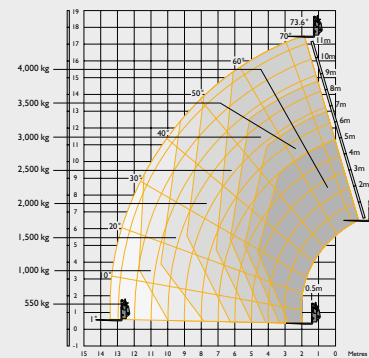
Complies with stability test EN 1459 Annex B. chassis levelling (sway) with stabilisers retracted (sway angle  $\pm 9^\circ$ ).

LIFT PERFORMANCE

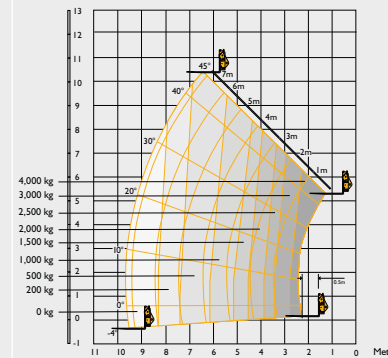
540-180 HiViz stabilisers retracted sway



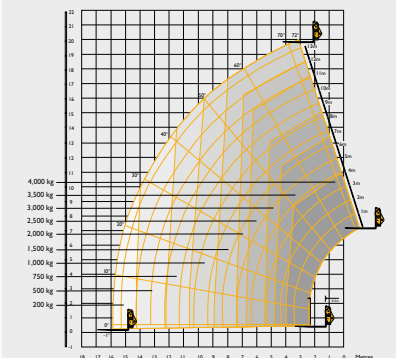
540-180 HiViz stabilisers extended sway



540-200 stabilisers retracted sway



540-200 stabilisers extended sway



Maximum lift capacity	kg	4000	4000	4000	4000
Lift capacity to full height	kg	500	2500	500	1500
Lift capacity at full reach	kg	0	550	0	200
Lift height	m	12.54	17.51	10.27	20
Reach at maximum lift height	m	5.9	1.88	6.42	2.82
Maximum forward reach	m	10.10	13.34	9.63	15.9
Reach with 1 tonne load	m	6.22	11.72	6.25	10.65
Placing height	m	12.0	17.0	9.1	19.1

Complies with stability test EN 1459 Annex B. chassis levelling (sway) with stabilisers retracted (sway angle  $\pm 9^\circ$ ).

\*Sway levelling is optional, performance may vary when not fitted.

▲ Standard machine software interlock - 45° boom angle limit, configurable upon service request.